

ORGANIZERS

PARTNER

# WROCLOVE 2023

## International Working Equitation Competition

## Polish Working Equitation Championships

### DRAFT SCHEDULE

1. DATE: October 19-22, 2023
2. VENUE: Wrocław Horse Racecourse Partynice,  
Zwycieska 2, 53-033 Wrocław, POLAND
3. ORGANIZER: Working Equitation Poland (WEP)  
Wrocław Horse Racecourse Partynice  
FB: [WORKINGEQUITATION.PL](https://www.facebook.com/WORKINGEQUITATION.PL)  
[WWW. WORKINGEQUITATION.PL](https://www.workingequitation.pl)
4. SHOW DIRECTOR: Anna Skrzypek
5. SHOW OFFICE: Małgorzata Skubisz
6. GROUND JURY:  
GROUND JURY PRESIDENT: Nicola Danner (GER)  
JUDGES: Agata Milnerowicz (POL)  
Agnieszka Staniszevska – Bakula (POL)  
Ksenia Samsel (POL )  
Beata Libera (POL )
7. COMPETITION VET: Przemysław Różycki
8. MEDICAL SERVICE: Lucasmed: 504 005 245
9. STABLE SERVICE: Aleksandra Łacna
10. TRACK HOST: Jakub Tryc
11. ENTRIES DEADLINE: **October 13, 2023**

entries should be made via the [Equita.pl](https://Equita.pl)

if you have any questions, please contact: [wroclove@workingequitation.pl](mailto:wroclove@workingequitation.pl)

## 12. Priez Money

COMPETITION	1 <sup>st</sup> PLACE	2 <sup>nd</sup> PLACE	3 <sup>rd</sup> PLACE
Master class OPEN	P r i z e s i n k i n d		
Master class PC	P r i z e s i n k i n d a n d m e d a l s		
CC class OPEN	P r i z e s i n k i n d		
C-class OPEN	P r i z e s i n k i n d		
P-class OPEN	P r i z e s i n k i n d		
L-class OPEN	P r i z e s i n k i n d		
LL class OPEN	P r i z e s i n k i n d		

In the Master class, the results will be divided into two classifications:

- 1) OPEN CLASSIFICATION – for all competitors entered to compete in the international competition
- 2) POLISH CHAMPIONSHIP CLASSIFICATION – for competitors of Polish nationality participating in the Polish Championships.

In other classes, competitors compete in open international competitions.

## 13. COMPETITION SCHEDULE (Note! It may change due to the number of entries)

### 18/10/2023 WEDNESDAY

The organizer provides boxes for competitors' horses from 8.00

**COMPETITION ARENA** available for competitors from 18:00-21:00

Training with David Oliveira.

### 19/10/2023 THURSDAY

- DRESSAGE TEST - CLASS L (<https://workingequitation.pl/wp-content/uploads/2022/03/6.-2022-L-EN.pdf>)
- MANEABILITY TEST - CLASS L AND LL
- 19:00 - VETERINARY CHECK - MASTERS CLASS - **TRAINING ARENA**
- **COMPETITION ARENA** available for competitors from 18:00-21:00
- Training with David Oliveira.

### 10/20/2023 FRIDAY

- DRESSAGE TEST - CLASS P (<https://workingequitation.pl/wp-content/uploads/2022/03/6.-2022-P-EN.pdf>)
- DRESSAGE TEST - CLASS C (<https://workingequitation.pl/wp-content/uploads/2022/03/6.-2022-C-EN.pdf>)
- DRESSAGE TEST - CLASS CC (<https://workingequitation.pl/wp-content/uploads/2022/03/6.-2022-CC-EN.pdf>)
- DRESSAGE TEST - MASTERS CLASS (test WAVE Masters – International WE Dressage test)

### 21/10/2023 SATURDAY

- MANEABILITY TEST - CLASS P
- MANEABILITY TEST - CLASS C
- MANEABILITY TEST - CLASS CC
- MANEABILITY TEST - MASTERS CLASS

### 12.06.2023 SUNDAY

- SPEED TEST - CLASS P
- SPEED TEST - CLASS C
- SPEED TEST - CLASS CC
- SPEED TEST - MASTERS CLASS

## 14. ENTRY FEES

### BOXES:

Boxing for the entire competition (18-22.10.2023) with the first bedding	400 PLN/90 EUR
Each additional day of box rental started	100 PLN/25 EUR
Deposit for box cleaning	45 PLN/10 EUR

(to be refunded on departure if the competitor leaves the box clean – without straw)

**Attention! Please bring portable horse troughs with you.**

### ENTRY FEES:

CLASS LL	100 PLN / 25 EUR
L-CLASS	200 PLN / 45 EUR
P-CLASS	200 PLN / 45 EUR
CLASS C	300 PLN / 65 EUR
CLASS CC	300 PLN / 65 EUR
MASTERS CLASS	350 PLN / 80 EUR

## 15. INFRASTRUCTURE

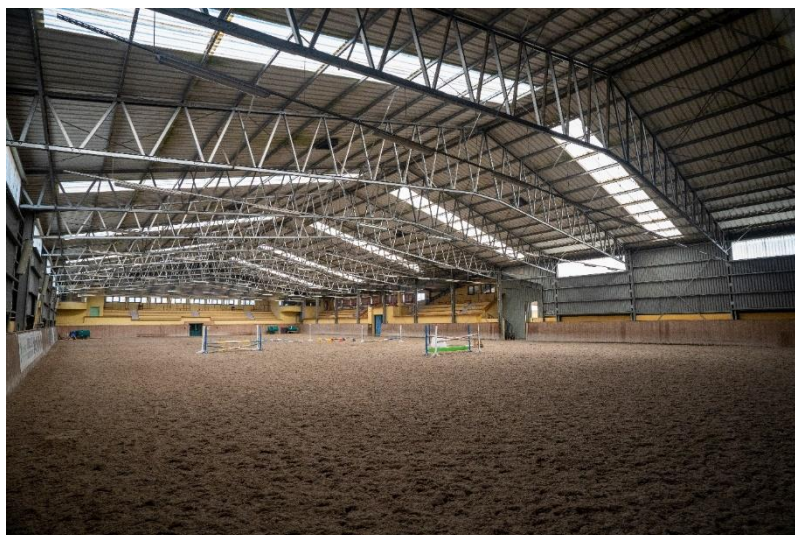
**COMPETITION ARENA** – dimension 72 m x 36 m, quartz sand with fleece

**TRAINING ARENA** - dimension 60 m x 20 m, quartz sand with fleece

**OPEN TRAINING ARENA** - dimension 75 m x 34 m, quartz sand with fleece

**COVERED LUNGE** – diameter 25 m, quartz sand with fleece

**BOXES** - dimension 3 m x 3 m, tent stable, water taps and green area by the stable



Competition Arena 72 m x 36 m



Training Arena 60 m x 20 m

## 16.ADDITIONAL INFORMATION:

The organizer is not responsible for any damage, accidents or theft.

Regulations available at: <https://workingequitation.pl/regulaminy/>

### Accommodation suggestion:

- 1) AGRO Hotel facility, Zwycieska 4, 55-033 Wroclaw (450m)
- 2) Hotel Bacero\*\*\*, Olaszynska 107, 53-034 Wroclaw (750m)
- 3) Hotel Novotel Wroclaw\*\*\*, Wycigowa 35, 53-011 Wroclaw (1700m)
- 4) Hotel Ibis Budget Wroclaw Południe\*, Wycigowa 35A, 53-011 Wroclaw (1700m)
- 5) Hotel Bielany\*\*\*, Klecinska 3, 55-040 Bielany Wroclawskie (3300m)